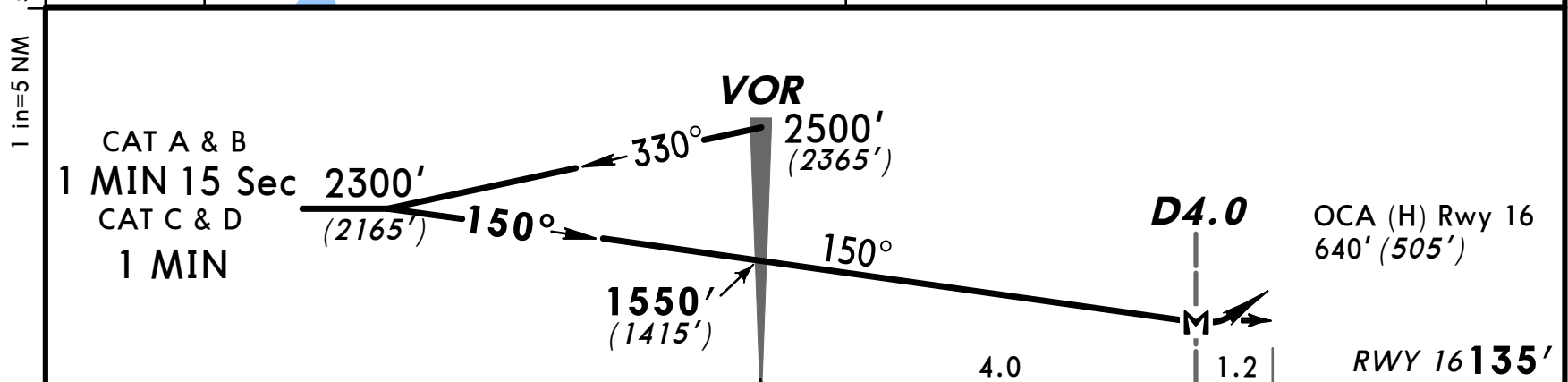
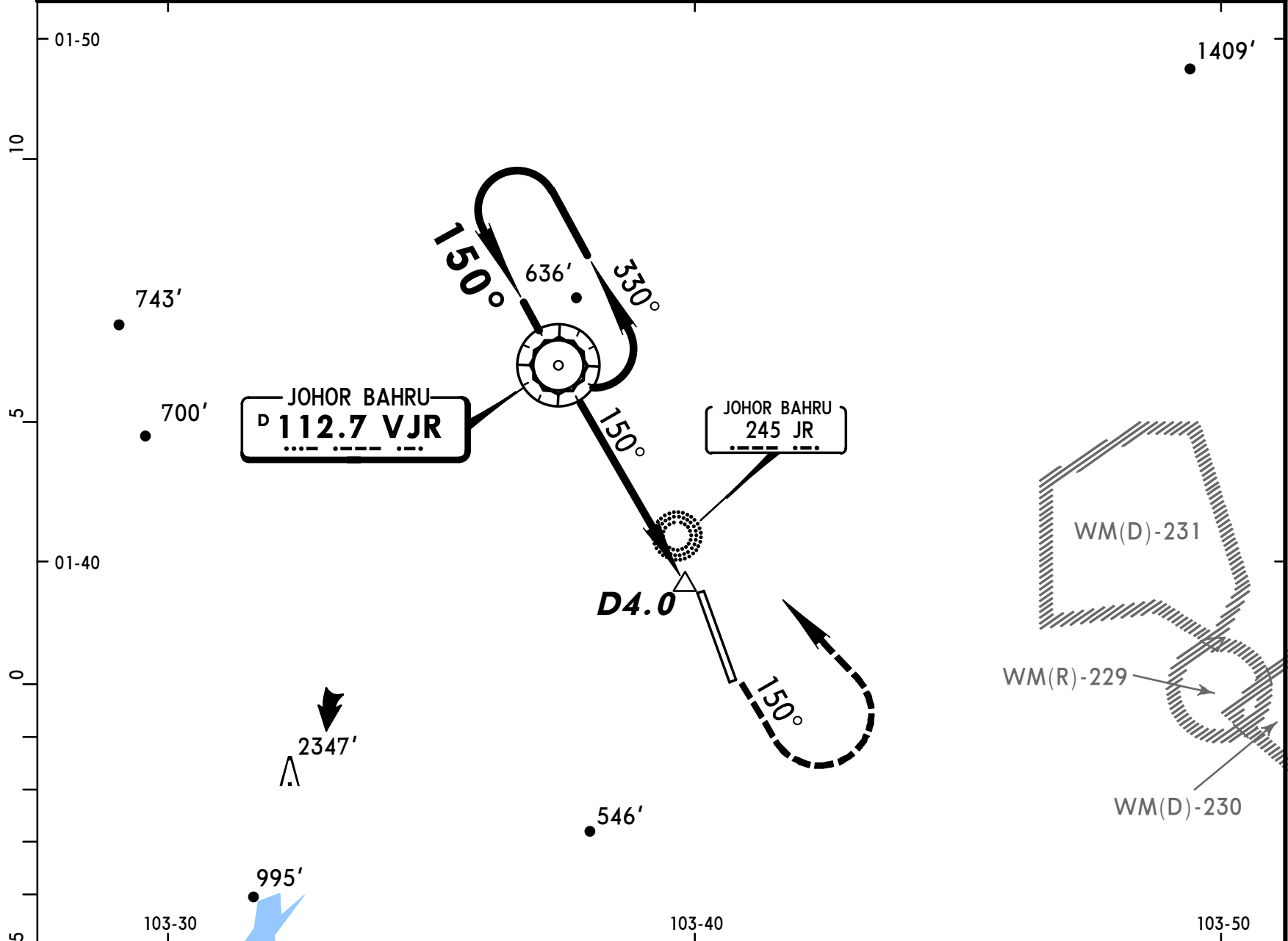


WMKJ
SULTAN ISMAIL

22 DEC 00 **(13-3)**

*ATIS 126.6		*JOHOR Approach 124.7		*JOHOR Tower 122.5		*Ground 121.8	
VOR VJR 112.7	Final Apch Crs 150°	Minimum Alt VOR 1550' (1415')	MDA(H) 640' (505')	Apt Elev 135' RWY 16 135'		<p>MSA VJR VOR</p>	
MISSED APCH: Climb on 150° to 1000' turn LEFT and return to VJR VOR at 2500' or as directed by ATC .							
Alt Set: hPa Rwy Elev: 5 hPa Trans level: FL 130 Trans alt: 11000' (10865') 1. Procedure based on: (CAT A & B) 130 kts IAS (CAT C & D) 185 kts IAS.							



Gnd speed-Kts	70	90	100	120	140	160	PAPI ALS	1000' ↑	on 150°	LT	VJR 112.7
Descent Gradient 4.7%	333	428	476	571	666	762					
MAP at D4.0											

STRAIGHT-IN LANDING RWY16				CIRCLE-TO-LAND				
MDA(H) 640' (505')				MDA(H)				
ALS out								
A			1200m		1600m		100	670' (535')-1900m
B			1600m		2400m		135	670' (535')-2800m
C			1600m		2400m		180	1050' (915')-3700m
D			1600m		2400m		205	1050' (915')-4600m